

WoodShop Order Form- Casegoods & Nightstands

Use one form per unique item. For beds and headboards, see separate form.



7-drawer dresser pictured, but use for all WoodShop casegood and nightstand orders

We make it as easy as 1-2-3-4!

- 1) Choose Your Top Color & Texture
- 2) Choose Your Base Color & Texture
- 3) Choose your hardware (if applicable)
- 4) Submit your order form!



Customer Information

Dealer Name: _____ Date: _____
 Dealer Email: _____ Phone: _____
 Customer Name or PO: _____

Order Information

Product Item #: _____

Quantity: _____

1)

Top Color	<i>(choose one color and one texture)</i>		Top Texture
Wheat	Slate		Smooth
Coffee	Charcoal		Circle-sawn
Stone	Whitewash		

2)

Base Color	<i>(choose one color and one texture)</i>		Base Texture
Wheat	Slate		Smooth
Coffee	Charcoal		Circle-sawn
Stone	Whitewash		

3)

Hardware *(see the Fireside Lodge Catalog for all hardware choices)*

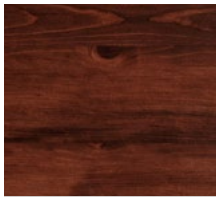
Other Notes

4)

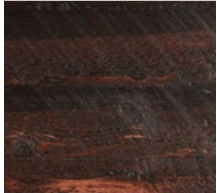
Email, scan and send, or print and fax your order form!
 orders@firesidelodgefurniture.com • fax: 218.568.8222 • call: 877.568.6188

[Click to email](mailto:orders@firesidelodgefurniture.com)

WoodShop Options



Coffee



Wheat



Slate



Charcoal



Stone



Whitewash



Rusted Knocker
SH107



Rusted Cup
SH108



Rusted Knob
SH109



Elegant Pull | Knob
SH104 | SH105



Modern Pull | Knob
SH102 | SH103



Forged Pull
SH106



Bronze Geometric Pull | Knob
UH104 | UH105



Silver Geometric Pull | Knob
UH106 | UH107



Woven Cup | Knob
UH100 | UH101



Bronze Simple Pull | Knob
UH108 | UH109



Silver Simple Pull | Knob
UH110 | UH111



Twisted Pull | Knob
UH102 | UH103