



FIRESIDE LODGE
FURNITURE COMPANY

Field Guide
& Standards

Field Guide & Standards

The purpose of this publication is to help you learn more about Fireside Lodge’s product lines and what makes our rustic furniture the best in the industry! Whether you are a dealer carrying our furniture, or just plain old curious, you should find answers to the most common questions within.

If you can’t find the answers within or have product specific questions, please contact customer service or your account manager.

Table of Contents

About Fireside Lodge	3
Our Sustainability Pledge	4
Product Lines	5
Barnwood	
WoodShop	
Cedar Log	
Hickory Log	
Appalachian	
Mountain Ash	
Wood Species	8
Reclaimed Oak Barnwood	
Northern White Cedar	
Hickory	
Circle-sawn Pine	
Stains & Finishes	12
Furniture Care Tips	15
Features & Build Methods	16
Cosmetic Standards	19

Main Office

Toll free: 877.568.6188

Fax: 218.568.8222

info@firesidelodgefurniture.com

Customer Service

218.568.2450

Mailing Address

PO Box 665

Pequot Lakes, MN 56472





FIRESIDE LODGE

FURNITURE COMPANY

Rustic furniture for your modern world

From regional to international...

In 1998, Fireside Lodge began as a manufacturer of handcrafted cedar log furniture that supplied a regional market. Over the next several years, our reach and variety of product offerings increased to include everything from hickory log to reclaimed wood, and incorporate styles ranging from our "rustic" roots to transitional, industrial, modern, and beyond.

Today, more than 20 years later, our products are found in hotels, resorts, lodges, stores, and homes across North America and as far away as New Zealand. With more than 4,000 standard item choices, Fireside Lodge is North America's most comprehensive builder of rustic furniture.

At a glance:

- ◇ Our furniture is made in the USA and handcrafted by expert craftspeople
- ◇ Every piece is unique and built to order – we do not warehouse
- ◇ Perfectly suited for rustic, modern, industrial, and transitional decors
- ◇ We offer custom furniture design services
- ◇ We take sustainability seriously – from our choice of building materials to our operations
- ◇ We stand behind our products: All of our furniture comes with a limited lifetime warranty against manufacturer defects

Our sustainability pledge

As a builder of solid wood furniture, we rely on good old Mother Nature for everything we create. That makes it our duty to pay special attention to making environmentally-responsible decisions. Whether that is choosing low VOC and non-toxic stains and finishes, building with renewable or reclaimed materials, or operating as close to zero-waste as possible, we have made a commitment to work with the future in mind.

FIRESIDE LODGE
FURNITURE COMPANY



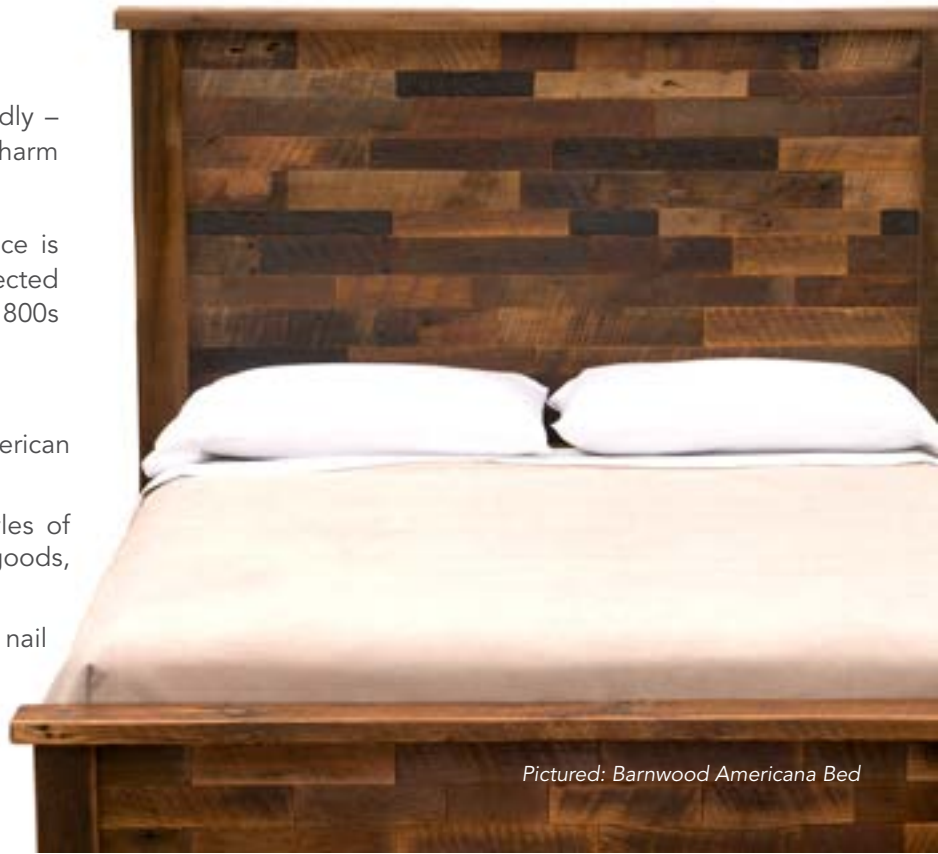
Barnwood Collection

Reclaimed history...

Substantial, durable, and environmentally friendly – the Barnwood Collection combines Old World charm with modern sensibilities.

Not manufactured, but benchmade, every piece is unique and crafted from re-purposed, hand-selected oak timbers and planks from deconstructed 1800s tobacco barns.

- ◇ Made with reclaimed red oak from American tobacco barns (see page 9).
- ◇ Comprehensive offering: more than 100 styles of beds, nightstands, dining tables, chairs, casegoods, vanities, and more.
- ◇ Rich in character with a mixture of saw marks, nail holes, checking, and natural patinas.
- ◇ Perfectly suited for almost any decor.
- ◇ Custom pieces and design available.



Pictured: Barnwood Americana Bed

WoodShop Collection

Customize every piece.

New in 2020, the WoodShop Collection by Fireside Lodge Furniture allows your customers to create a customized look for their bedroom, dining room, or gathering room that spans nearly any style from transitional to rustic.

With multiple stain colors and more than a dozen hardware choices, the number of options is staggering!

- ◇ Made from responsibly-sourced pine a circle-sawn texture (see page 11).
- ◇ Great coordinating stain choices.
- ◇ Every piece is custom: several combinations are possible.
- ◇ Pick from more than a dozen hardware choices to complete your look.



Pictured: WoodShop Carriage House Bed

Cedar Log Collection

Timeless ... rugged ... environmentally responsible.

Whether you want to highlight the picturesque setting of your mountain retreat or bring the peacefulness of the north woods into your home decor, nothing says "rustic" like the natural beauty of Fireside Lodge cedar log furniture.

Cedar Log is where we began almost 30 years ago, and to date, no one can boast a more solidly-built, beautifully natural piece of Cedar Log furniture!

- ◇ Crafted from responsibly-sourced northern white cedar (see page 8).
- ◇ Built using strong mortise-tenon joinery.
- ◇ Custom tenonizer gives each log a unique, hand-hewn look.
- ◇ Available in four standard color options.
- ◇ 100's of standard items in all room categories and custom furniture design available.



Pictured: Cedar Log 7-Drawer Dresser

Hickory Log Collection

An American classic.

Hickory log furniture has long been a mainstay of American rustic furniture with its strength, durability, and distinct look.

Built using time-tested techniques, Fireside Lodge's Hickory Log Collection boasts a rustic appeal while hearkening back to a bygone day providing a unique end result.

- ◇ Hickory furniture is dense, tough, and durable.
- ◇ Available in five great stain choices.
- ◇ Available with a classic or refined texture style (see page 10).
- ◇ Every piece is unique and built to order specifically for you.
- ◇ Standard items in all room categories and custom furniture design available.



Pictured: Hickory Log Sunburst Bed

Appalachian Collection

Barnwood & hickory were made for each other.

Stretching from southern New York to northern Mississippi, the Appalachian region is the birthplace of so much American history – and Fireside Lodge Furniture's Appalachian Collection captures the romance inherent in the region's rustic simplicity and cultural wealth.

The two predominate woods used in this collection are both sourced from the Appalachian region in the United States and combine to create truly unique and timeless furniture.

- ◇ Authentic reclaimed red oak from American tobacco barns.
- ◇ Rich in character with a mixture of saw marks, nail holes, checking, and natural patinas.
- ◇ Hickory log accents and legs add a distinctly rustic flair.
- ◇ Standard items in most room categories (custom available).
- ◇ Every piece is unique and built to order specifically for you.



Pictured: Appalachian Windowpane Bed

Mountain Ash Collection

An instant heirloom...

A beautiful species of hardwood native to the Great Lakes Region, black ash stands on the precipice of destruction due to the invasive emerald ash borer beetle.

Fireside Lodge has developed a limited line centered around this unique wood so it can live on for future generations to enjoy. The Mountain Ash bedroom collection incorporates simple lines that help highlight the wood's naturally rustic graining patterns.

- ◇ The collection includes a bed, two nightstand styles and two casegood styles.
- ◇ Offered in two stain colors
- ◇ Every piece is unique and built to order specifically for you.





Northern White Cedar

All of Fireside Lodge's Cedar Log Furniture is crafted using northern white cedar. Indigenous to Northern Minnesota, Eastern Canada, and the Northeast United States, Fireside Lodge harvests its cedar locally from its Minnesota location. We even operate our own cedar saw mill that produces the lumber for our furniture!

Cedar Log is Fireside Lodge's most complete collection, and one of our most popular lines of furniture. Seeing as we have over 25 years experience building it, we have it down to a science – as such, no one can boast a more solidly-built, beautiful natural log furniture.

Sustainability



Not only is northern white cedar prolific in its population and locally sourced, we also use every bit of the tree down to the last twig and speck of saw dust. All of these factors make it rank very high on the sustainability chart.

Color Variation



The heartwood is a pale brown or tan while the narrow sapwood is nearly white often becoming more golden with age and sun exposure. Small knots are common in the wood adding to the variety in color.

Character



By hand-peeling our logs, we expose all the knots, beetle galleries, checking and so much more to add to the character-filled rustic appeal of northern white cedar.

Hardness



Northern white cedar is extremely light and quite soft, but boasts excellent decay resistance and strength despite these characteristics. For heavily used surfaces, we also offer an optional Armor or Liquid Glass finish to increase its lifespan!

Watch videos

[Making a Cedar Log Bed](#)

[Making Cedar Log Unique](#)

Found in these product lines...

- ◇ Cedar Log Collection
- ◇ Voyageur Collection

Interesting Facts

- ◇ White cedar plays an important role in traditional Ojibwe culture; named "Grandmother Cedar," it was used for medicine, canoe ribs, crafts, and was considered a sacred gift to humanity.
- ◇ White-cedar is very long lived growing to ages in excess of 1,650 years!
- ◇ With foliage rich in Vitamin C, it is said Jacques Cartier and his party used white cedar to cure scurvy in the mid-1500s as they explored the Great Lakes.



Reclaimed Oak Barnwood

We are proud to use reclaimed barnwood that has been repurposed from deconstructed tobacco barns. Unlike other “barnwoods” that are comprised of soft woods like pine or manufactured using chemical and stain processes, Fireside Lodge only uses authentic oak barnwood: a far superior choice due to not only its strength and hardness, but also because its beauty and character is naturally obtained.

With a complete set of offerings in every room and the ability to transcend decorating styles from rustic to industrial-modern, our solidly-crafted Reclaimed Barnwood is an extremely popular choice and has been a top seller year after year.

Sustainability



Every plank and timber of our barnwood has been repurposed from deconstructed 1800s tobacco barns. As these barns would normally be torn down with the remnants dumped in a landfill, our furniture gives the reclaimed oak a new life.

Color Variation



From rich golds, to warm auburns, to pitchy black graining and saw marks – the natural patina of our barnwood is replete with a variety of colors making it draw the eye and create a unique look for every piece.

Character



Our Barnwood is absolutely filled with character making every piece unique. Hand-selected by our craftspeople, the graining, saw marks, nail holes and more come together to provide furniture rich in character.

Hardness



“The mighty oak” is aptly descriptive. Strong and resilient, this hardwood becomes even more dense through our kiln-drying process. It is hearty, heavy, and durable.

Watch videos

[Reclaimed Barnwood Furniture](#)

Found in these product lines...

- ◇ Barnwood Collection
- ◇ Appalachian Collection
- ◇ Custom Furniture

Interesting Facts

- ◇ Yes, squirrels are noted for their acorn gather abilities, but blue jays aren't far behind. On average, one blue jay can plant more than 110 acorns per day!
- ◇ Ancient druids considered the oak tree sacred and used it as a symbol of strength and longevity.
- ◇ The oak was voted America's National Tree in 2001 and is the most widespread tree species in the temperate zones of the Northern Hemisphere.



Hickory

Hickory is an excellent choice for furniture due to its innate strength, density, and character. Fireside Lodge sources its hickory from the American southeast where it is harvested in late fall and through mid-winter when its moisture content is low. From here it is kiln-dried to further remove moisture and the bark tightens around the logs during the process providing a truly beautiful texture and a time-tested look. From there, we offer hickory in two textures: classic and refined. Classic keeps most of the bark for a natural look. Refined removes the bark to let the character of the wood underneath shine.

Our Hickory Log Collection also features live-edge bark trim around its tops to further accentuate the piece. When added to the gorgeously complex graining patterns, it creates a timeless look that furthers its rustic appeal.

Sustainability



Our hickory is harvested using a coppicing technique where wood is cut when it is at the appropriate diameter. Once harvested, saplings regenerate from the stump in a fraction of the time it takes for a full tree to grow (6-10 years and they are ready for reharvest)!

Color Variation



Hickory is distinguished by its dramatic contrasts of dark and light. Colors can vary from coffee, to caramel, to blonde with prominent grain patterns and burls.

Character



Hickory sports a high to moderate amount of character with its color streaks, knotting, and prominent grain patterns. Add the textures of live-edge tops and bark-on legs, and that is one distinct piece of furniture!

Hardness



Ever heard the saying "tough as hickory?" Hickory is strong, hard, heavy, and dense. In fact, it is just about the toughest and densest hardwood that natively grows in North America.

Watch videos

[Rustic Hickory Log Furniture](#)

Found in these product lines...

- ◇ Hickory Log Collection
- ◇ Appalachian Collection
- ◇ Custom Furniture

Interesting Facts

- ◇ Hickory is sometimes called pecan, and pecan is sometimes called hickory. Though they are both members of the walnut family, they are different!
- ◇ Andrew Jackson (7th President of the United States) was nicknamed "Old Hickory" because of his toughness on the battlefield.
- ◇ Some hickory species produce edible nuts just like its cousins the walnut and the pecan.



Circle-sawn Pine

Circle-sawn is all the rage with its added depth, distinct character, and rustic look – and Fireside Lodge uses only the best circle-sawn pine in its WoodShop Collection of furniture. Harvested locally in Northern Minnesota, we mill the pine and follow up with a kiln-drying process to ensure the moisture content is just right for your furniture.

With Fireside Lodge's WoodShop Collection, you can vary your customized look by choosing different stains and hardwares to create your very own piece of furniture!

Sustainability



We locally source all the pine timbers we use in our furniture. As a fast growing species, it renews quickly as well. Furthermore, we only use low VOC and non-toxic stains and finishes.

Color Variation



Circle-sawn pine relies on the variation in texture from the saw marks to create variations in color. Additionally, the graining patterns achieve a mix of dark and light coloring.

Character



Pine has a moderate amount of character naturally, but when using circle-sawn textures, the pine takes on a completely different look that is similar to our authentic reclaimed barnwood.

Hardness



Though pine itself is a soft wood, our finishing process provides an added measure of durability and longevity. For heavily used surfaces, we also offer an optional Armor finish to increase its lifespan!

Watch videos

[WoodShop Collection Overview](#)

[WoodShop Stains & Options](#)

[WoodShop Ordering](#)

Found in these product lines...

- ◇ WoodShop Collection
- ◇ Custom Furniture

Interesting Facts

- ◇ There are more than 100 different species of pine trees that grow across the globe.
- ◇ Pine trees distribute their seeds via pine cones, and some pine cones will stay on a tree for up to ten years! Other pine cones require a hot, fast fire for them to release their seeds.
- ◇ White pine, the type Fireside Lodge uses, is a long-lived species, able to grow for 200 years or more. With age, white pine can become 150 ft high and over three feet in diameter.

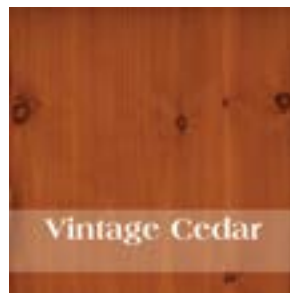
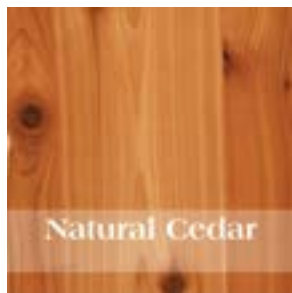


Stain & Finish Options

It's amazing how just a change in color can affect the overall look of a piece of furniture. Fireside Lodge has curated a number of exclusive stain offerings across our collections that not only help highlight the unique characteristics of each wood type, but are also low VOC and non-toxic making them as environmentally responsible as possible.

And when it comes to finishes, we offer three different potential options - though not all finishes are available on all items.

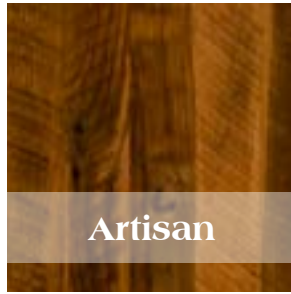
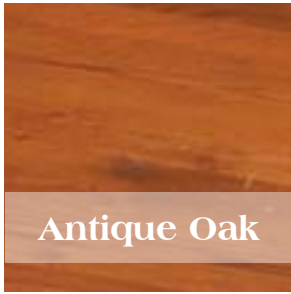
Cedar Log Collection



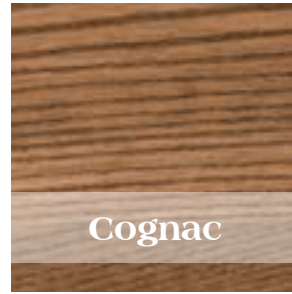
WoodShop Collection



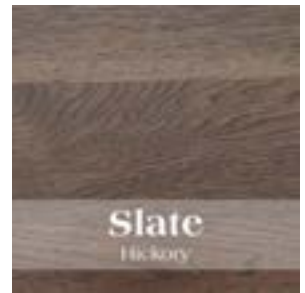
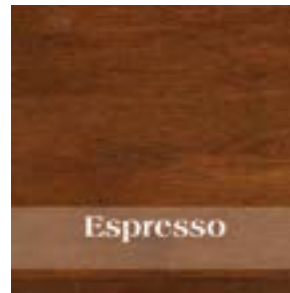
Reclaimed Barnwood Collection



Mountain Ash Collection



Hickory Log Collection



Hickory Stains & Textures

Classic & Refined



Finish Options

Fireside Lodge Furniture offers three different finish options. Though most of our furniture uses our standard finish, some items will come standard with a harder Armor or Liquid Glass finish. Still yet other pieces that are used in high-wear areas (like dining room tables, coffee tables, and others) have the option of upgrading to the Armor or Liquid Glass finishes.

If a piece of furniture uses one of the optional finishes as standard, it will be called out in the product's specifications.

Standard Finish

Fireside Lodge uses a clear coat, catalyzed lacquer with a satin finish. The finish draws out the natural colors in the wood and will seal and protect your furniture.

Treat the surface with any level of care that you would with any fine furniture (see Care Tips).

Available on...

- All standard items
- All product lines

Armor Finish

Providing a medium satin sheen, this premium quality, post-catalyzed, alkyd-amino varnish is formulated to offer superior durability, and UV protection. It helps prevent scratching and denting, but does not all together eliminate the possibility, especially on soft wood products like found on the WoodShop and Cedar Log Collections.

This finish offers additional protection on high-use surfaces like dining table tops.

Though the Armor finish holds up to frequent cleaning, avoid using cleaners that contain ammonia or bleach.

- Dining table tops
- Occasional table tops
- Most product lines (minus Barnwood)

Liquid Glass Finish

With a high gloss sheen, this upgrade finish is made from a two-part epoxy. Equivalent to 50 coats of polyurethane, the finish is tough, yet flexible and not prone to shattering from impact.

With outstanding moisture resistance, Liquid Glass is an ideal coating for bathroom vanities, bar tops, coffee tables, desk tops, and dining tables.

Pledge furniture polish will prolong the life of the surface and clean smudges. Impressions will often disappear over time (depending on room temperature), but light surface scratches may appear with use.

- Dining table tops
- Vanity tops
- Bar tops
- Desk tops
- Coffee tables
- Available on Cedar Log Collection items

Furniture Care Tips

General Care Tips...

- Lift items rather than dragging them across the floor.
- Don't place hot items directly on your furniture. If something is too hot to hold in your hand, it is too hot for your furniture.
- Every effort should be made to keep your fine furniture away from direct sunlight and heat sources such as radiators, hot air outlets, or wood stoves. These conditions will cause the wood to dry out and subsequently split.
- Humidity between 35 to 45 percent guards against shrinking and cracking or expansion. Humid environments such as basements should be avoided. You may choose to dehumidify or humidify depending on your environment. Extreme temperature and humidity fluctuations can damage wood.
- Fireside Lodge does not recommend the use of glass tops on solid wood surfaces which restricts the normal exchange of moisture and could damage the wood surface. The use of glass tops will void the product warranty should structural damage occur.
- **IMPORTANT:** Like all wood surfaces, do not leave any liquid for a period of time on table tops.
- If you are installing a sink in a vanity top, please be sure to seal the freshly cut wood edges with a lacquer or polyurethane to properly seal the unfinished wood grain.
- Please note that all Fireside Lodge Furniture is designed to be kept indoors unless otherwise noted. Being exposed to the outdoor elements (i.e. temperature and humidity fluctuations, and direct sunlight) will impact the furniture's finish and longevity.

A note on cleaning and disinfecting

Cleaning refers to the removal of germs, dirt, and impurities from surfaces. It does not kill germs, but by removing them, it lowers their numbers and the risk of spreading infection.

Recommended Cleaning: Solid wood is like nature: please, **NO chemicals** (i.e. bleach and Windex) or polish; for cleaning, simply use a damp cloth only followed by a dry soft cloth.

Additional cleaning options include:

- Use a detergent solution specifically designed for wood floors. Make certain all moisture is wiped fully dry or to a level that will evaporate rapidly.
- Use a 0.5% solution of a dish washing soap designed for hand washing dishes, and again make certain all moisture is wiped fully dry.

Disinfecting refers to using chemicals (i.e. EPA-registered disinfectants) to kill germs on surfaces. This process does not necessarily clean dirty surfaces or remove germs, but by killing germs on a surface after cleaning, it can further lower the risk of spreading infections.

- We **DO NOT** recommend the use of bleach, alcohol or disinfectant cleaners which are applied by spray.
- If disinfecting is required, we suggest using hand wipes such as Clorox or Lysol disinfecting wipes.
- **PLEASE NOTE:** using chemical cleaners will decrease the lifespan of the finish and Fireside Lodge Furniture cannot honor warranty claims for improper care of our products.

Build Glossary & Features

It would take an encyclopedia (remember those?) to highlight all of our build methods and cover the applicable woodworking terminology; but below are some of our highlights and product features that set Fireside Lodge apart from many other rustic furniture builders.

Aromatic Cedar Drawer Bottoms

Our premium line of casegoods utilizes aromatic cedar drawer bottoms. But why use such a beautiful piece of wood on the bottom of a drawer?

Along with being a traditional application in handmade furniture, the answer is in its name: aromatic. The woody scent is not only easy on the nose, it also naturally wards off pests and moths keeping your contents safe.



Artisan Tops

Now that's a table top! Our artisan tops are made from solid 8/4 reclaimed red oak planks that have been straight-line ripped and glued. They are then banded (the edge piece) with solid reclaimed oak timbers and utilize exposed dowel joinery to attach the banding to the edge of the joined planks.

Gorgeous and filled with character, these table tops are truly a conversation starter.



Bark-on

By harvesting hickory only in the late fall and winter, our hickory is able to retain its bark thereby adding a rustic texture to its character. Fireside Lodge then kiln-dries the logs which compresses the bark. Add some light sanding and two coats of lacquer, and you have a rustic piece that will last and last.

(See the cosmetic standards section for more information).



Bracing

How does Fireside Lodge ensure your casegoods are built to last? Our craftspeople use up to 14 extra braces on the interior of the frame that other builders don't even consider. Those braces are dadoed into the sides of the dresser/cabinet thereby providing added strength and stability.

Overkill? Perhaps, but like we just mentioned... we build our furniture to last.



Cope & Stick Frames

Fireside Lodge uses these decorative frames in many of its Cedar Log and Hickory Log casegoods.

It refers to a type of construction where all the members of the door frames are given a decorative profile on the edge. The frame, in turn, is then joined to the inset panel.



Dado & Rabbet Joinery

A dado is a slot or trench cut perpendicularly into the grain of the wood. By cutting across the grain instead of with the grain (then called a groove), it further strengthens the joint. Rabbet joinery is similar but simply differs in the placement of the slot.

Dovetailed Drawers

All of Fireside Lodge's drawers are dovetailed. An heirloom technique used since before written history, dovetail joints are perfect for drawer boxes.

Our drawers have a high tensile strength (a resistance to being pulled apart), thus adding quality to the build of our casegoods and ensuring that your furniture will last despite the thousands of pulls that are bound to happen during its lifetime.



European-style Hinges

A European-style hinge is a concealed hinge that you can't see when the cabinet door is closed. This helps to keep the exterior profile of your piece clean and uncluttered.

Furthermore, it helps to keep it clean in general! A European hinge collects less dust, dirt, grease and moisture than the knuckle/barrel of an exposed hinge.



Floating Panel Construction

For many of Fireside Lodge's cabinet doors and other pieces, we use a joined framework around wood panels that are inserted along a tongue and groove.

This is an essential element of constructing heirloom furniture because wood panels must have room to breathe. The panel "floats" within the frame structure (no glue or nails) which prolongs the life of the piece while preventing cracking.

Hand-peeled Logs

Many log furniture builders use machine peelers to get their logs ready for construction resulting in smooth logs devoid of character.

Fireside Lodge hand-peels our logs to retain all the natural beauty of the log (knots, beetle galleries, inner-cabium, natural bends, etc.), ensuring no cookie-cutter results and making every piece of furniture distinctly unique.

Live Edge

A number of Fireside Lodge furniture pieces incorporate a live edge in their design. This is where the craftsman incorporates the natural edge of the log into the design of the piece creating a rustic, character-filled result.

Examples include our Cedar Log and Hickory Log collections.



Mortise & Tenon Joinery

This type of joinery is one of the oldest forms of furniture construction dating back thousands of years. Why do we still use it? Simple: it is a strong joint that allows for just the right amount of swelling, contraction, and movement.

The mortise (the hole part) accepts the tenon tongue and locks in place. The joint itself is strong enough on its own, but builders today use glue and fasteners to further ensure it is built to last.

Moreover, we use unique tenonizers that create a rustic tenon that looks hand-hewn unlike others in the industry that produce results of cookie-cutter, bell-shaped tenons.



Soft-close & Drawer Guides

Fireside Lodge uses full-extension ball bearing guides rated at 100 pounds on all of our drawers.

Furthermore, our nightstands and premium line of casegoods also feature soft-close mechanisms that prevent drawers from slamming shut.



A Note On STURDY

The STURDY Act (Stop Tip-overs of Unstable, Risky Dressers on Youth Act) was announced and signed into law during December 2022. With this law, the depth guide on the top drawer on casegoods affected by STURDY were shortened by 2 inches. But don't worry, the drawers are still the same size.

We also changed the back of our dressers and chests to use melamine instead of plywood. As a heavier, denser material, it acts as a counterweight thereby ensuring that it stays upright even when the drawers are fully extended and holding additional weight.

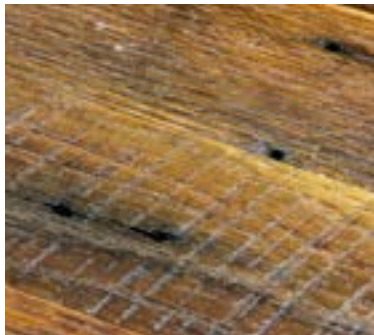
Cosmetic Standards

Is it an imperfection, or beauty mark? Part of the appeal of rustic furniture is its innate character. That means our furniture has all sorts of different aesthetic features that are naturally occurring. So before you wonder if that "crack" or "mark" is a defect, check out the following description of some of the more common occurrences with reclaimed and natural wood furniture.

What are all these strange marks on my cedar furniture?

Those, my friend, are **bark beetle galleries**. Gorgeous, aren't they? When our craftspeople hand-peel the outer bark from the cedar logs, they get excited when they reveal the intricate little mazes below. The added designs are not only natural, but can be downright artistic, thus the name "gallery." And don't worry... those little buggers have flown the coop and are long gone!

Bark beetles bore straight tunnels into the inner bark (i.e. the phloem) to find a safe place to nest for the winter, and when spring comes, the little larvae spread out creating the branched-out tunnels and finally exit the tree upon maturity. An interesting fact: when a tree is overrun, the beetles release a pheromone that is like Mother Nature's "No Vacancy" sign, thereby deterring more beetles from nesting there.



Why does my barnwood furniture have little holes?

No, the wood wasn't used as a backdrop for dartboards. These are real **nail holes**. This feature is found exclusively in our reclaimed barnwood furniture.

As the planks and timbers have been repurposed from deconstructed tobacco barns, they carry the distinct markings of their prior use. Dark spots around the nail holes become more pronounced due to minerals leached from the metal nails over the years, thus adding to the wood's character and beauty. So don't think of them as holes — think of them as history marks.

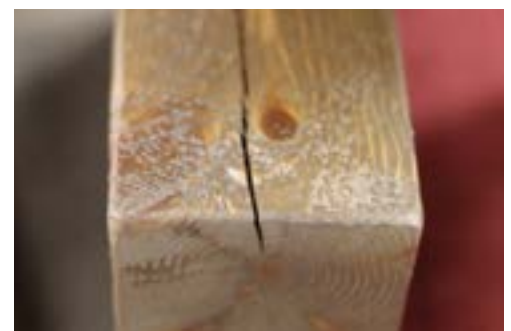
Cracks? What the heck! This is a new bed!

Don't worry – that is called "**checking**." It is completely natural and should be expected in most solid wood and log furniture and will not affect the structural integrity of the furniture.

Due to the innate characteristics of wood, as it seasons and dries over time, it shrinks and swells at different rates. Because the stress is unequal across the wood fibers, it splits and creates those cracks, or "checks." Some might see a crack and question the structural integrity of the wood; however, it is actually becoming stronger as its density increases through the seasoning process (less moisture = denser).

Checks are most common in softer woods like cedar and pine and is less common in barnwood; however, it is possible in all solid wood furniture.

In log furniture, the checks will not surpass the center of the log and will, at times, have a secondary check. With solid woods like our barnwood or pine furniture, the checks should be hairline-sized in width and only a few inches long.



*"This part of my dresser is darker than other parts...
What gives?"*

All wood, depending on species, can display all sorts of **variation in color**.

Because Fireside Lodge uses natural and reclaimed woods, it is common to have color variation due to grain patterns, saw marks, and the way the wood has aged, or accepts finishes and stains. These variations are truly a key element in the beauty of the product, and make each piece of furniture a unique work of art. As such, these variations are desirable and should never be considered defects.

Since every piece is bench-built, our craftspeople individually select each piece of the furniture to create an end-product that highlights these characteristics, resulting in an aesthetically pleasing blend.



What is this whitish stuff on my hickory furniture?

If you find portions of hickory logs that appear to be discolored or have "white spots," what you have noticed is **lichen**.

Lichen grows naturally on almost all barks, and with bark-on furniture (like Fireside Lodge's Hickory Log collection) it becomes one with the furniture as it has literally become part of the tree itself! This is part of the natural appeal of rustic furniture and has been sealed underneath the finish that keeps your furniture protected.

I was looking REALLY closely at my furniture and I saw...

...and you saw **wood filler**.

No natural or reclaimed wood is perfect, but to help finish your furniture, our craftspeople may use wood putty and filler to deemphasize imperfections inherent in the materials. We try to limit this to table tops and desk tops only because items like these have a higher need for flatness. It ensures there are less areas for crumbs to collect and provides a smooth writing surface.

Since Fireside Lodge furniture is hand-made from natural materials, this is a necessary step to help maintain consistency in finish, smoothness, and aesthetic.



Some of the places didn't have this "wood filler" stuff.

My goodness... picky, aren't you? No worries, we are too. Not all **knots** need to be filled—especially when they add to the furniture's character and appeal without compromising its integrity, or on areas of the furniture that won't collect undue debris (like table tops).

Knots are natural imperfections in the wood where tree branches were enclosed within the trunk. Much of Fireside Lodge's furniture uses the entire tree, therefore knots of varying sizes and shapes will be present.